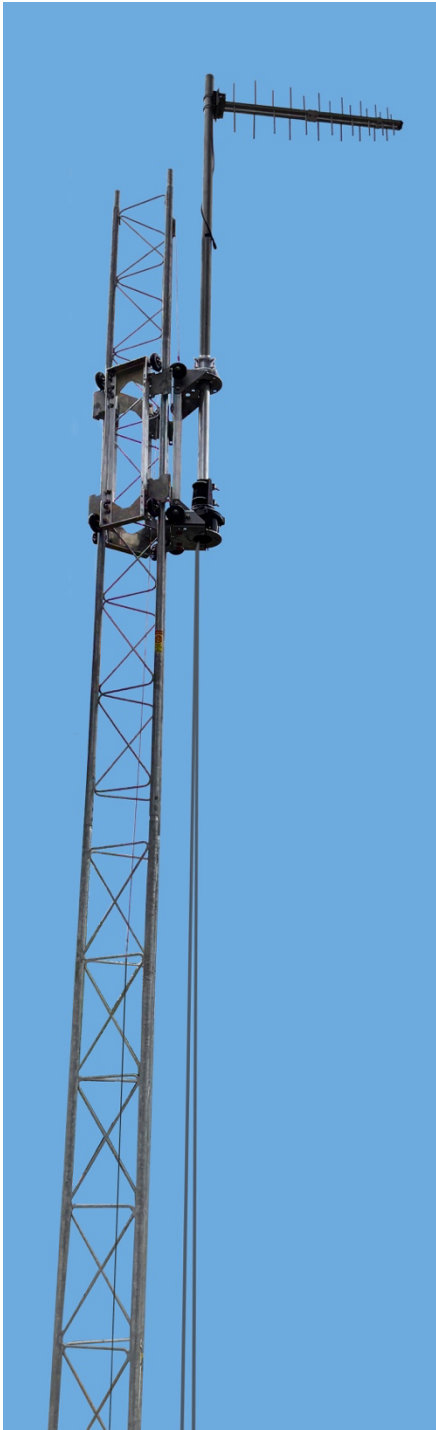


The Carlson Tower Lift – Model 25

A Safer, Faster Way to Service Equipment on ROHN® 25G and Amerite® 25 towers

The Carlson Tower Lift is a precision-engineered mechanical elevator system that eliminates the need to repeatedly climb sectional lattice towers to perform needed servicing.



The initial release, Model 25, works on ROHN® 25G and Amerite® 25 towers up to 60-feet tall. The Carlson Tower Lift can be installed together with new tower installations and retrofitted onto existing towers.

The Lift secures the tower-top equipment – antenna(s), mast, rotator, thrust bearing – into a sturdy Carriage that is mechanically raised and lowered on the tower from ground level with an integrated winch-and-pulley system.

The Lift enables the antenna and equipment to be lowered to a comfortable working height to safely and easily perform basic antenna equipment service, maintenance and replacement. The Lift then raises the Carriage and equipment back to the top of the tower.

The Carlson Tower Lift is a refined evolution of traditional “hazer” systems, built with consistently tight manufacturing tolerances and engineered to ensure smooth and safe operation. Patent-pending features enable the Lift operator on the ground to:

- Effectively manage the guy lines so they do not interfere with the Lift’s movement up and down the tower, and,
- Securely station the Carriage on any rung of the tower.

Finally! A safer, faster way to reliably and cost-effectively service your tower-top equipment.



CARLSON
Roof Towers

A SOLID BASE FOR
CLEAR COMMUNICATION

System Components

Lift Tower kit:



- Carrier Tram
- Support Trams Assembly
- 6 Tram Connectors
- Tram Connector Hardware
- 3 Quick Links – ¼”
- Winch Assembly
- Winch Hardware – (4) U-bolts, (8) locknuts, (8) washers
- Top Pulley Assembly
- Lift Cable
- Parking Lock Rope
- Speed Wrench, ⅝-inch Deep-Well Socket, ⅜” Socket Adapter for power drill
- Anti-Seize Lubricant, 1-oz tube

Mid-Level Guy Line Assemblies kit:

- 3 Mid-Level Guy Line Assemblies, each Assembly consisting of a 60-foot Guy Line pre-attached to a Rung Bracket

A full description of each component above is provided in the Installation, Operation & Maintenance Manual (Section I, page x).

How to Order

Before you order: Determine whether mid-level guying is necessary. If so, also order the Mid-Level Guy Line Assemblies kit. Even if you are retrofitting a standing tower that already has mid-level guy lines, you will replace those lines with our patent-pending Mid-Level Guy Line Assemblies, which are specially designed to work smoothly with the Lift.

The Carlson Tower Lift is stocked and sold by our distributor, DX Engineering. We also sell direct.

Check our website, rooftowers.com, for pricing information and product updates.

To discuss the Carlson Tower Lift, ask any questions, check on available inventory, and/or to place an order:

Email sales@rooftowers.com, or call 707-223-4000

