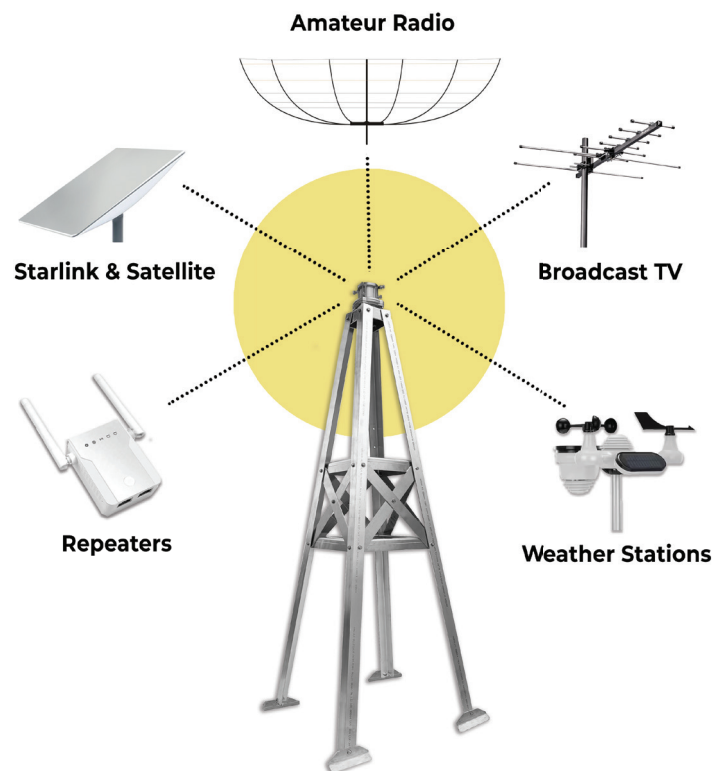


**A Carlson Roof Tower provides a solid foundation
for many types of antennas and wireless
communication systems ...**



FOUR TOWER SIZES



(See the opposite page for Tower Specifications)

Secure Your Wireless Communications with a Strong Multi-Use Rooftop Antenna Tower

The Perfect Solution For:

- HOA restrictions
- Limited lot space
- 2nd or 3rd tower
- Ideal for satellite & ISS

Robust Antenna and Rotator Support

- ✓ Up to 15 sq. ft. wind loading
- ✓ Supports fixed, single-axis, and 2-axis rotators
- ✓ Low Earth Orbit (LEO) satellite antennas
- ✓ VHF and UHF Yagis
- ✓ HF Hex Beams
- ✓ From 40 meters to centimeter frequencies

All-Aluminum Heavy-Duty Design

- ✓ Tower legs constructed from 6061-T6 aluminum angle
- ✓ X-braces, collar, feet, and rotator shelf made from 5052-H32 aluminum formed, and precisely laser-cut to support a tetrahedron shape
- ✓ Stainless steel hardware with nylon lock nuts
- ✓ Self-aligning and easy to assemble
- ✓ Feet swivel to fit perfectly on sloped or flat roof
- ✓ Tower can be fully tilted, enabling easy access for adaptations and maintenance
- ✓ Climbable with appropriate safety equipment



Carlson Roof Towers

A SOLID BASE FOR CLEAR COMMUNICATION

www.rooftowers.com • sales@rooftowers.com

TOWER SPECIFICATIONS

Carlson Roof Towers

Specifications	IO-45HD	IO-610HD	IO-810HD	IO-815HD
Price	\$470 plus shipping	\$650 plus shipping	\$870 plus shipping	\$930 plus shipping
Tower Height	4.2 feet (50 inches)	6 feet (72 inches)	7.9 feet (95 inches)	7.9 feet (95 inches)
Shipping Weight	39 lbs.	49 lbs.	62 lbs.	74 lb.
Base Width (to outer edge of leg)	25 inches	27 inches	32 inches	32 inches
Maximum Wind Load at 80 mph	13 sq. ft.	12 sq. ft.	12 sq. ft.	15 sq. ft.
Max. Weight: Antenna + Rotor + Mast	200 lbs.	200 lbs.	200 lbs.	250 lb.
Tower Top Width	5 inches	5 inches	5 inches	5 inches
Rotor Plate Location from Top	38 inches (bottom shelf)	40.5 inches (bottom shelf)	40.5 inches (top shelf)	63.5 inches (bottom shelf)
Maximum Mast Diameter	2.5 inches	2.5 inches	2.5 inches	2.5 inches
Maximum Mast Extended Length	7 feet (84 inches)	7 feet (84 inches)	7 feet (84 inches)	7 feet (84 inches)
Rotor Mounting Options	Yaesu Series	Yaesu Series	Yaesu Series	Yaesu Series
Thrust Bearing Mounting Options	Yaesu GS-065	Yaesu GS-065	Yaesu GS-065	Yaesu GS-065
Fixed (non-rotating) Mast Option	Mast Clamp Set	Mast Clamp Set	Mast Clamp Set	Mast Clamp Set
Leg Material	6061-T6 Alum (3/16" thick x 2" angle)	6061-T6 Alum (3/16" thick x 2" angle)	6061-T6 Alum (3/16" thick x 2" angle)	6061-T6 Alum (3/16" thick x 2" angle)
Foot, Shelf and X Brace Material	5052-H32 Alum (3/16" thick x 2" formed)	5052-H32 Alum (3/16" thick x 2" formed)	5052-H32 Alum (3/1" thick x 2" formed)	5052-H32 Alum (3/16" thick x 2" formed)
Assembly Hardware	5/16"-18 18-8 stainless steel	5/16"-18 18-8 stainless steel	5/16"-18 18-8 stainless steel	5/16"-18 18-8 stainless steel
Foot to Leg Hardware	3/8"-16 18-8 stainless steel	3/8"-16 18-8 stainless steel	3/8"-16 18-8 stainless steel	3/8"-16 18-8 stainless steel
Nylon Locknuts	Yes	Yes	Yes	Yes
Climbable	Yes - w/ tower climb- ing belt or harness	Yes - w/ tower climb- ing belt or harness	Yes - w/ tower climb- ing belt or harness	Yes - w/ tower climb- ing belt or harness

CARLSON ROOF TOWERS rooftowers.com | sales@rooftowers.com | 707-223-4000

15990 Algoma Ave. NE Cedar Springs MI 49319 USA